

RESEARCH EDGE

.....
Investment

December 20, 2019

Table Of CONTENT

| | |
|----|---------------------|
| 01 | About |
| 02 | Trades - Positional |
| 03 | Trades – Investment |
| 04 | Review - Positional |
| 05 | Review - Investment |
| 06 | Statistics |
| 07 | Sector to watch |
| 08 | Sector to avoid |
| 09 | Investing skills |
| 10 | Notes |

About

Trades - Positional

Trades – Investment

Review - Positional

Review - Investment

Statistics

Sector to watch

Sector to avoid

Investing skills

Notes

This adept newsletter helps you find the most interesting stocks from a technical point of view. We adopt Trend following trading strategy, where we buy into strength, buying stocks on the way up in prices, not when they've sunk lower and look cheap.

In this newsletter, we give intermediate to long term trading / investment advice. These advices are suitable for traders who are willing to hold a position for 1-3 months. In rare cases holding period may extend 3 months.

When we give any recommendation, we advise clients to buy stocks making new high from a well defined consolidation. Our plan is simple, we ride stocks as high as we can but when they head south we have a stop loss and trailing stop loss to protect us.

We use end of the day prices for all our calculations and weekly prices to understand long term trend. We don't take into account intra day movement because we focus on long term holding.

Trailing stop loss becomes new stop loss. Developing Trade – Trades which are still available, if prices touch those levels. Closed trades – Trades where target was met or got stopped out. cancelled Trade – Recommended trade which are now cancelled as setup is no longer valid.

Avanti Feeds Ltd

| | | | |
|------------|--------|--------------------|-----------------|
| AVANTIFEED | 569.85 | HORIZON 1-3 MONTHS | |
| BUY | 569.85 | 740-797 | STOP LOSS 471.1 |

In Avanti, We witnessed a long consolidation for more than 1 year. In today trading session prices moved beyond a well defined base and reached a new 52 weeks high. Current levels of 569.85 provides a very good entry point with a target of 740-797, a stop can be placed at 471.1



About

Trades - Positional

Trades – Investment

Review - Positional

Review - Investment

Statistics

Sector to watch

Sector to avoid

Investing skills

Notes

GMR Infrastructure Ltd

| | | | |
|----------|-------|------------------|--------------|
| GMRINFRA | 21.85 | HORIZON 1-2 YEAR | |
| BUY | 21.85 | - | STOP LOSS 19 |

Today we are recommending one long term trade , where holding period is close to year , these long term trades are subject to future quarterly earning . We are advising client to buy GMR infra, which is a major player in the infrastructure sector with world class project in India and abroad. It's a major player in airport building where more than 50 % revenue comes from developing and operating airports . We expect major increase in airport traffic over a period of few years and GMR will be one of the beneficiary of the same . We advice client to Buy GMT infra at current price of 21.85 with a stop loss of 19 (closing basis).



About

Trades - Positional

Trades – Investment

Review - Positional

Review - Investment

Statistics

Sector to watch

Sector to avoid

Investing skills

Notes

About

Trades - Positional

Trades – Investment

Review - Positional

Review - Investment

Statistics

Sector to watch

Sector to avoid

Investing skills

Notes

| DEVELOPING TRADES | | | | CANCELLED TRADES | | |
|-------------------|-------------|-----|-------------|------------------|------------|-------------|
| Symbol | Advice Date | LTP | Entry Price | Symbol | Date | Trade Valid |
| | | | | TATACOFFEE | 01/06/2018 | N |
| | | | | DELTA CORP | 17/05/2019 | N |
| | | | | | | |
| | | | | | | |

About

Trades - Positional

Trades – Investment

Review - Positional

Review - Investment

Statistics

Sector to watch

Sector to avoid

Investing skills

Notes

| CLOSED TRADES | | | | | |
|---------------|-----------|-------------|------------|--------------|---------|
| Symbol | Exit Date | Entry Price | Exit Price | Exit Signals | P/L |
| BAJAJHLDNG | 24/04/19 | 3366 | 3300 | TREND CHANGE | -66 |
| TORNTPHARM | 25/04/19 | 1949.75 | 1728.4 | STOP LOSS | -221.35 |
| BATAINDIA | 02/05/19 | 1135 | 1477 | TARGET | 342 |
| ABFRL | 15/05/19 | 218.45 | 194 | STOP LOSS | -24.45 |
| AUROPHARMA | 13/05/19 | 831.15 | 718.3 | STOP LOSS | -112.85 |
| MTEUCARE | 17/05/19 | 91.65 | 72.5 | STOP LOSS | -19.15 |
| ICICIGI | 29/05/19 | 931.1 | 1210.43 | TARGET | 279.3 |
| FINEORG | 03/06/19 | 1231.15 | 1600.9 | TARGET | 369.7 |
| ASTRAZEN | 04/16/19 | 1982.45 | 1925.95 | TREND CHANGE | -56.45 |
| SAKSOFT | 10/06/19 | 281.5 | 365 | TARGET | 83.5 |
| SAKSOFT | 11/06/19 | 281.25 | 365.9 | TARGET | 84.65 |
| TITAN | 26/06/19 | 1053.25 | 1316.56 | TARGET | 263.31 |
| LALPATHLAB | 02/07/19 | 1162.3 | 1065 | STOP LOSS | -97.3 |
| RBLBANK | 19/07/19 | 643.34 | 540.29 | STOP LOSS | -103.05 |
| SAKSOFT | 24/07/19 | 321.85 | 280 | STOP LOSS | -41.8 |
| 513097 | 22/07/19 | 103.45 | 94 | STOP LOSS | -9.45 |
| INTELLECT | 25/07/19 | 280.5 | 244.4 | STOP LOSS | -36.1 |

About

Trades - Positional

Trades – Investment

Review - Positional

Review - Investment

Statistics

Sector to watch

Sector to avoid

Investing skills

Notes

| CLOSED TRADES | | | | | |
|---------------|-----------|-------------|------------|--------------|--------|
| Symbol | Exit Date | Entry Price | Exit Price | Exit Signals | P/L |
| 505533 | 29/07/19 | 352 | 287 | STOP LOSS | -65 |
| PRAJIND | 30/07/19 | 152.1 | 103.8 | STOP LOSS | -48.3 |
| HAVELLS | 30/07/19 | 737.15 | 654.2 | STOP LOSS | -82.95 |
| VAIBHAVGBL | 01/07/19 | 678.05 | 881.45 | TARGET | 203.4 |
| 538566 | 23/07/19 | 210 | 185 | STOP LOSS | -25 |
| HDFCAMC | 03/09/19 | 2061.6 | 2679.5 | TARGET | 617.9 |
| LALPATHLAB | 11/09/19 | 1170.2 | 1345 | TARGET | 174.8 |
| LUPIN | 01/10/19 | 773 | 711 | STOP LOSS | -62 |
| IPCALAB | 07/10/19 | 938.45 | 894 | STOP LOSS | -44.45 |
| IPCALAB | 07/10/19 | 968.2 | 894 | STOP LOSS | -74.2 |
| FINEORG | 15/10/19 | 1521.5 | 1901.8 | TARGET | 380.3 |
| SAKSOFT | 24/10/19 | 260.4 | 232.5 | STOP LOSS | -27.9 |
| HESTERBIO | 30/10/19 | 1834 | 1662 | TREND CHANGE | -172 |
| ICICIBANK | 29/10/19 | 368.3 | 477.75 | TARGET | 109.45 |
| PIDILITIND | 15/11/19 | 1351.75 | 1316.65 | TREND CHANGE | -35.1 |
| HAVELLS | 22/11/19 | 717.85 | 653.7 | TREND CHANGE | -64.15 |
| HAVELLS | 22/11/19 | 679.05 | 653.7 | TREND CHANGE | -25.35 |
| 500214 | 06/12/09 | 823 | 698 | STOP LOSS | -125 |

About

Trades - Positional

Trades – Investment

Review - Positional

Review - Investment

Statistics

Sector to watch

Sector to avoid

Investing skills

Notes

| WEEKLY PRICE SHOCKERS (NSE EQUITIES) | | | | | |
|--|----------|----------|------------|---------|----------|
| Name | CMP | % Change | Name | CMP | % Change |
| MANAKSTEEL | 11.9 | 35.71 | SIMPLEXINF | -28.54 | 25.75 |
| ARROWTEX | 12.4 | 29.84 | UNIPLY | -27.63 | 11.4 |
| AARVEEDEN | 16.25 | 29.23 | ZICOM | -26.32 | 1.9 |
| LYKALABS | 21.1 | 27.25 | BAFNAPHARM | -25.35 | 3.55 |
| COMPINFO | 13.7 | 25.55 | HBSTOCK | -22.52 | 33.3 |
| MAXVIL | 56.05 | 24.71 | SINTEX | -21.74 | 1.15 |
| GPIL | 217.85 | 24.33 | URJA | -21.62 | 1.85 |
| ORTINLABSS | 11.25 | 24 | MCLEODRUSS | -21.35 | 4.45 |
| TRADE SCANNER (NIFTY 50 UPTREND STOCKS – WEEKLY) | | | | | |
| Name | CMP | 20 DMA | 50 DMA | 100 DMA | 200 DMA |
| TCS | 2222.9 | UP | UP | UP | UP |
| HCLTECH | 569.9 | UP | UP | UP | UP |
| NESTLEIND | 14858.25 | UP | UP | UP | UP |
| ASIANPAINT | 1799.25 | UP | UP | UP | UP |

About

Trades - Positional

Trades – Investment

Review - Positional

Review - Investment

Statistics

Sector to watch

Sector to avoid

Investing skills

Notes

| NIFTY METAL | | | | |
|---------------|----------|------|----------|-----------|
| OUTPERFORMERS | HINDALCO | NMDC | JSWSTEEL | TATASTEEL |

NIFTY METAL has seen a big correction, find support and build a narrow trading range. This range has seen a breakout. We may see higher levels here.

Its Comparative Relative Strength Index (CRSI) has also turned up, confirming its outperformance compare to the benchmark index 'NIFTY'.

It is very likely to continue this rally for next few weeks.



About

Trades - Positional

Trades – Investment

Review - Positional

Review - Investment

Statistics

Sector to watch

Sector to avoid

Investing skills

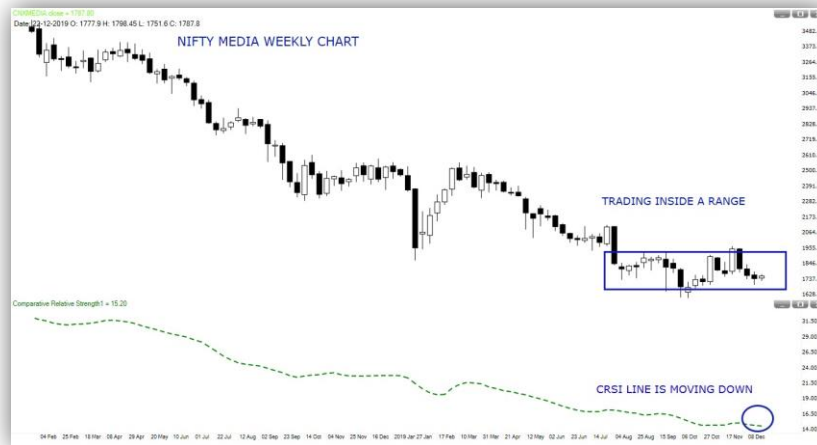
Notes

| NIFTY MEDIA | | | | |
|-----------------|-----|---------|-------|--------|
| UNDERPERFORMERS | UFO | TVTODAY | SUNTV | DBCORP |

NIFTY MEDIA is consolidating inside a trading range. An upside rally find resistance near the upper level of range. Prices are now trading near its support zone. We may see a breakdown here.

Its Comparative Relative Strength Index (CRSI) has also moving down, confirming its under performance compare to the benchmark index 'NIFTY'.

It is very likely that this underperformance may continue for few weeks.



About

Trades - Positional

Trades – Investment

Review - Positional

Review - Investment

Statistics

Sector to watch

Sector to avoid

Investing skills

Notes

Investing Skills

Investors Should Focus On The Primary Trend

As the market goes through a correction, Investors have reasons to feel concerned or even panic. They watch the value of their investments come down, wondering if they should sell out and buy later when the correction is done with.

The best suggestion to investors is to do nothing, stay invested. Selling now and buying when the correction is over assumes that the investors has knowledge of the time when the correction will end. No one can do such market timing, leave alone retail investors.

How can we get off track?

The primary causes of most financial market missteps tend to be related to the following:

- Trying to avoid volatility
- Failing to understand what normal volatility looks like
- Making short-term decisions based on fear and emotions
- Failing to clearly define our objectives
- Failing to develop specific strategies and tactics
- Narrow framing
- Underestimating the psychological aspects of successful investing
- Ignoring/fighting the primary trend
- Making things overly complex

About

Trades - Positional

Trades – Investment

Review - Positional

Review - Investment

Statistics

Sector to watch

Sector to avoid

Investing skills

Notes

1. Please execute the recommendation within the levels provided in the report. Once the recommendation is executed, it is advisable to keep a strict stop loss as provided in the report.
2. It is advisable to enter a trade after 9:30.
3. Intraday volatility or movement of a stock does not have any bearing on the long term prospects.
4. It is advisable to spread out trading fund in a balanced manner between various technical research products.
5. Please exit once the target is reached.
6. In open trades, if prices are between entry price and original stop then one can enter into fresh trades.
7. Please refrain from allocating entire trading funds to a single product or stock idea. It is advisable to allocate an equal amount to each recommendation
8. These investing ideas are designed for investing. They are NOT useful for trading in the derivatives segment. Please do not open positions in derivatives based on suggestion given here.
9. This is not a prediction tool. The key to successful investing is not to predict, but having sound principles and rules to guide you.
10. Stop loss should be followed on closing basis.
11. We also follow time based stop-loss. Open trades beyond 6 months are treated as EXPIRED

Disclaimer

S2 Analytics accepts no liabilities whatsoever for any loss or damage of any kind arising out of the use of this report. Past performance is not necessarily a guide to future performance. Actual results may differ materially from those set forth in recommendations. Forward-looking statements are not predictions and may be subject to change without notice.

This report is based on information obtained from public sources and sources believed to be reliable, but no independent verification has been made nor is its accuracy or completeness guaranteed. This report and information herein is solely for informational purpose and shall not be used or considered as an offer document or solicitation of offer to buy or sell or subscribe for securities or other financial instruments. The recipient should independently evaluate the investment risks. The securities discussed and opinions expressed in this report may not be suitable for all investors, who must make their own investment decisions, based on their own investment objectives, financial positions and needs of specific recipient. This may not be taken in substitution for the exercise of independent judgment by any recipient. The recipient should independently evaluate the investment risks. The value and return on investment may vary because of changes in interest rates, foreign exchange rates or any other reason.

s2 analytics

E-9, LGF, Masjid Moth, GK-3 New Delhi-48

+91 11 42563333

support@s2analytics.com

www.s2analytics.com